

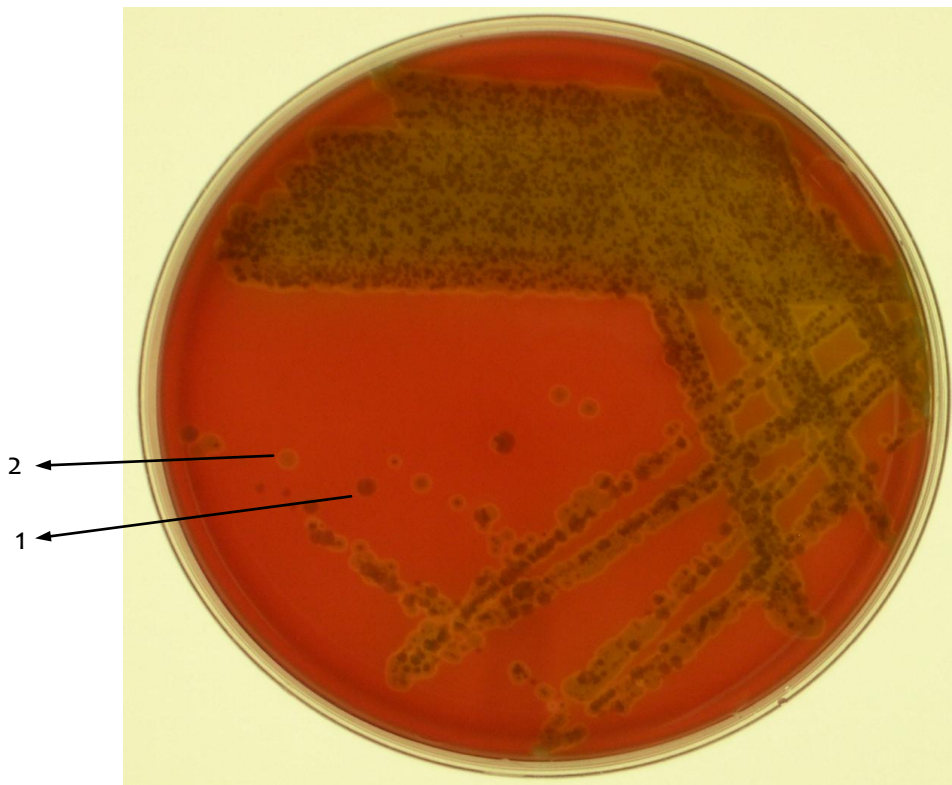
## Medium: Blood Agar Plate (BAP)

- a type of enrichment medium

☞ Sample: “fresh” throat swab (represents *properly collected/stored sample*)

☞ Macroscopy:

- Ample growth (3+ score) - higher amount of growth as compared to the old, “dry” swab sample
- Notice the presence of several colony morphologies/types of hemolysis:



1. **alpha** hemolysis = incomplete lysis of red blood cells, indicated by greenish area around colonies
2. **gamma** hemolysis = no lysis of red blood cells

☞ Note: This plate is a good example of the **four quadrant streak plate technique**