

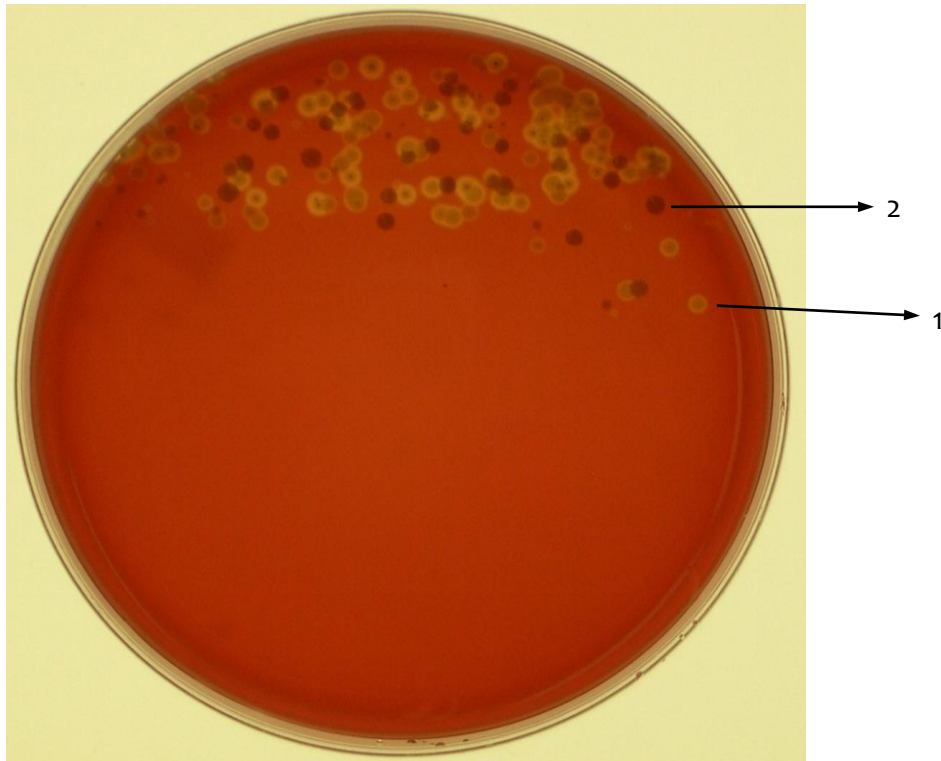
Medium: Blood Agar Plate (BAP)

- a type of enrichment medium

☞ Sample: “Dry” throat swab (represents *improperly collected/stored sample*)

☞ Macroscopy:

- Less growth (1+ score) than on the plate inoculated by the “fresh” throat swab
- Notice the presence of at least two different colony morphologies/types of hemolysis



1. **alpha** hemolysis = incomplete lysis of red blood cells, indicated by greenish area around colonies
2. **gamma** hemolysis = no lysis of red blood cells

☞ Note: no beta hemolytic colonies present on this plate.