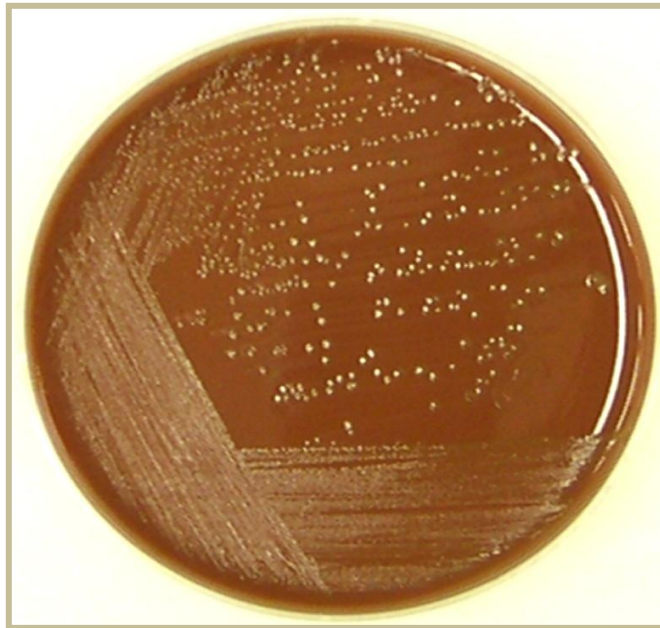


# Chocolate Agar Plate

Medium...

- ✓ enrichment type of medium
- ✓ required for the growth of certain *fastidious* organisms, including:
  - *Neisseriae sp*
  - *Hemophilus sp*
  - *Moraxella sp*



streak plate of ***Neisseria gonorrhoeae*** on **chocolate agar**

