

## KCTCS PEER COMPARISON Data 2004 - 2005

---

Enrollment

FTE

Full Time/Part Time Student Headcount

First Time Students

First Time Transfer to KCTCS Institution

Retention Rate

Ethnicity

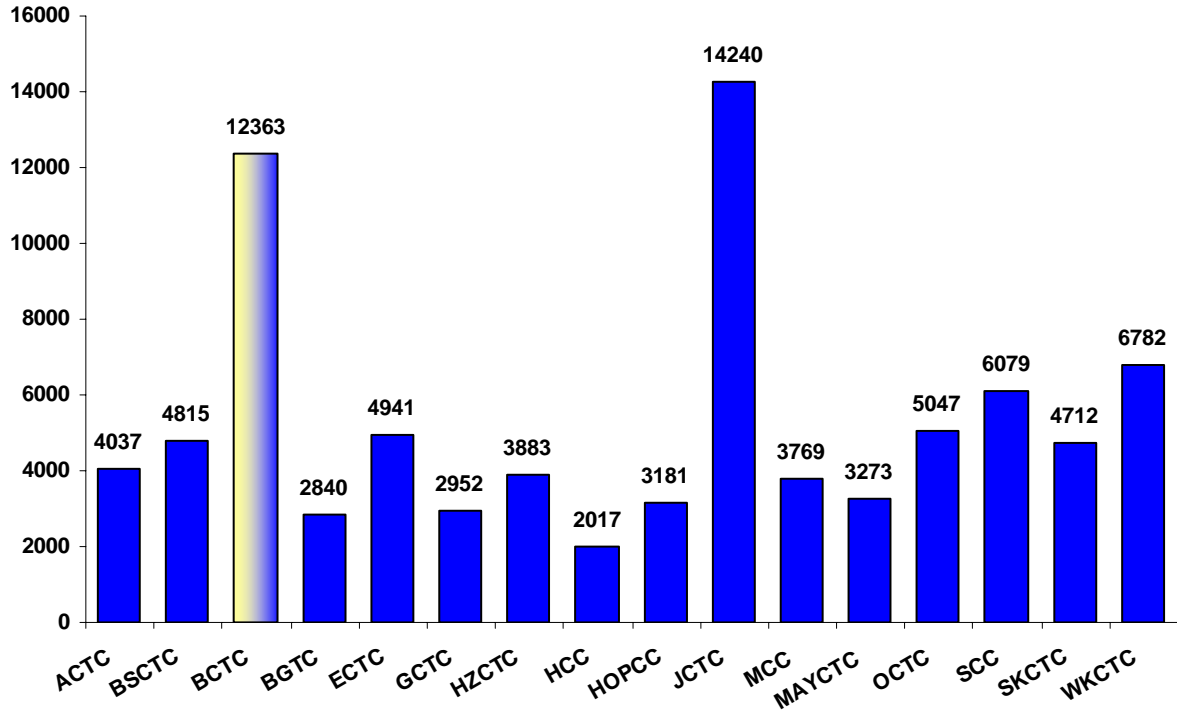
Gender

Age Groups

Total Credentials

Program Credentials

## KCTCS PEER COMPARISON Data 2004 - 2005 Enrollment

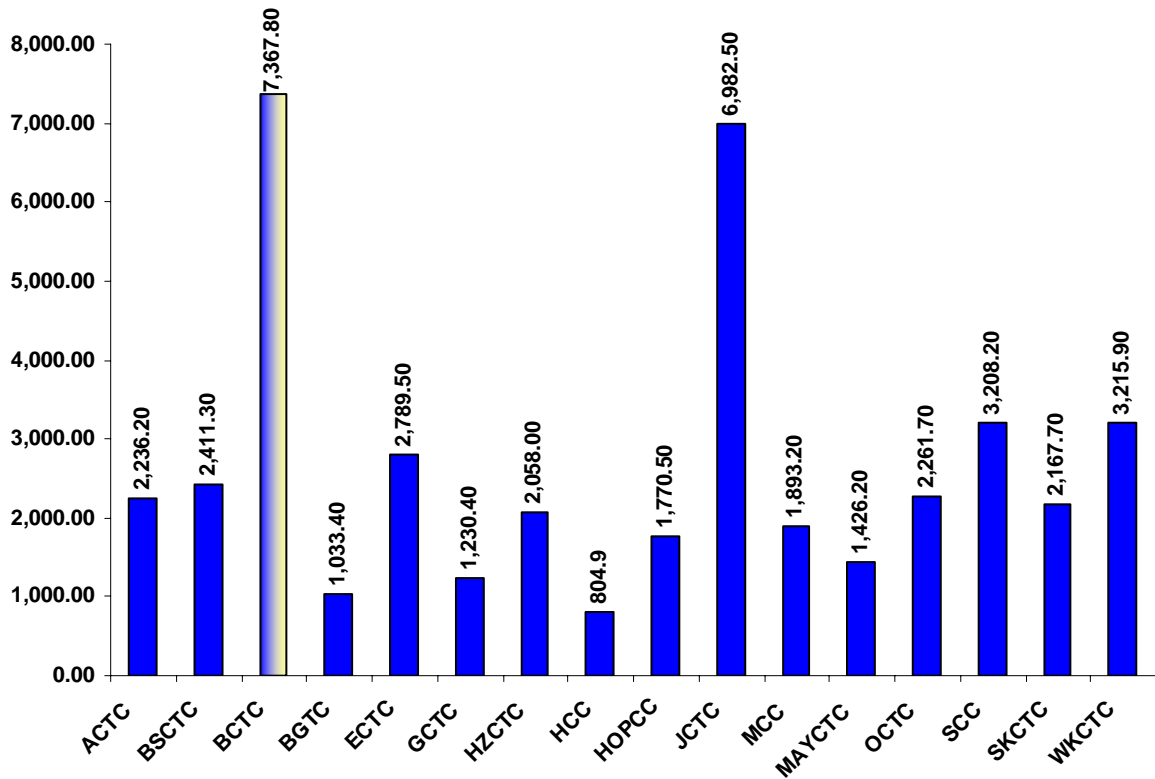


### Enrollment Fall 2005

#### Home College

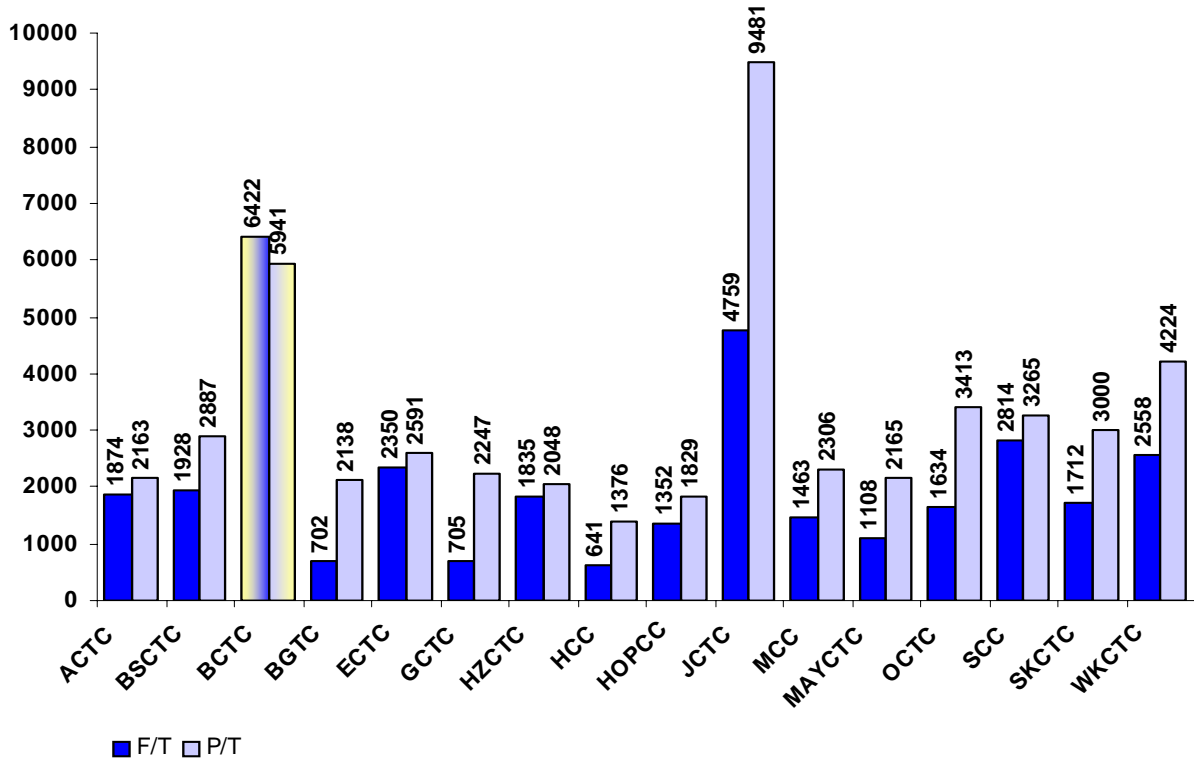
	(N)	%
Ashland Community & Technical College	4037	4.8
Big Sandy Community & Technical College	4815	5.7
<b>Bluegrass Community &amp; Technical College</b>	<b>12363</b>	<b>14.6</b>
Bowling Green Technical College	2840	3.3
Elizabethtown Community & Technical College	4941	5.8
Gateway Community & Technical College	2952	3.5
Hazard Community & Technical College	3883	4.6
Henderson Community College	2017	2.4
Hopkinsville Community College	3181	3.7
Jefferson Community & Technical College	14240	16.8
Madisonville Community College	3769	4.4
Maysville Community & Technical College	3273	3.9
Owensboro Community & Technical College	5047	5.9
Somerset Community College	6079	7.2
Southeast KY Community & Technical College	4712	5.5
West KY Community & Technical College	6782	8.0
<b>KCTCS Total</b>	<b>84931</b>	<b>100.0</b>

## KCTCS PEER COMPARISON Data 2004 - 2005 FTE



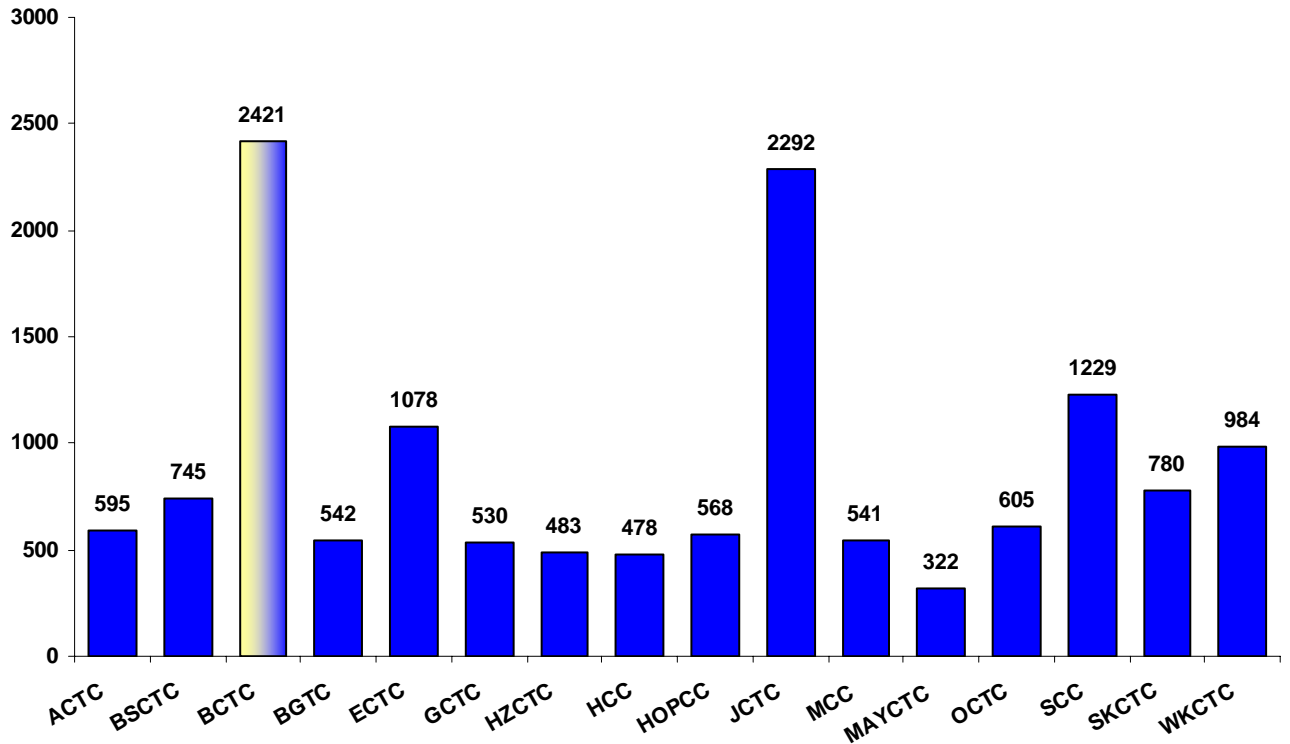
FTE		
Home College	F/T (N)	%
Ashland Community & Technical College	2236.2	5.2
Big Sandy Community & Technical College	2411.3	5.6
<b>Bluegrass Community &amp; Technical College</b>	<b>7367.8</b>	<b>17.2</b>
Bowling Green Technical College	1033.4	2.4
Elizabethtown Community & Technical College	2789.5	6.5
Gateway Community & Technical College	1230.4	2.9
Hazard Community & Technical College	2058.0	4.8
Henderson Community College	804.9	1.9
Hopkinsville Community College	1770.5	4.1
Jefferson Community & Technical College	6982.5	16.3
Madisonville Community College	1893.2	4.4
Maysville Community & Technical College	1426.2	3.3
Owensboro Community & Technical College	2261.7	5.3
Somerset Community College	3208.2	7.5
Southeast KY Community & Technical College	2167.7	5.1
West KY Community & Technical College	3215.9	7.5
<b>KCTCS Total</b>	<b>42857.3</b>	<b>100.0</b>

## KCTCS PEER COMPARISON Data 2004 - 2005 Full Time/Part Time Student Headcount



Full Time/Part Time Student Headcount					
Home College	F/T (N)	%	P/T (N)	%	All
Ashland Community & Technical College	1874	2.2	2163	2.5	4037
Big Sandy Community & Technical College	1928	2.3	2887	3.4	4815
<b>Bluegrass Community &amp; Technical College</b>	<b>6422</b>	<b>7.6</b>	<b>5941</b>	<b>7.0</b>	<b>12363</b>
Bowling Green Technical College	702	0.8	2138	2.5	2840
Elizabethtown Community & Technical College	2350	2.8	2591	3.1	4941
Gateway Community & Technical College	705	0.8	2247	2.6	2952
Hazard Community & Technical College	1835	2.2	2048	2.4	3883
Henderson Community College	641	0.8	1376	1.6	2017
Hopkinsville Community College	1352	1.6	1829	2.2	3181
Jefferson Community & Technical College	4759	5.6	9481	11.2	14240
Madisonville Community College	1463	1.7	2306	2.7	3769
Maysville Community & Technical College	1108	1.3	2165	2.5	3273
Owensboro Community & Technical College	1634	1.9	3413	4.0	5047
Somerset Community College	2814	3.3	3265	3.8	6079
Southeast KY Community & Technical College	1712	2.0	3000	3.5	4712
West KY Community & Technical College	2558	3.0	4224	5.0	6782
<b>KCTCS Total</b>	<b>33857</b>	<b>39.9</b>	<b>51074</b>	<b>60.1</b>	<b>84931</b>

## KCTCS PEER COMPARISON Data 2004 - 2005 First Time Students

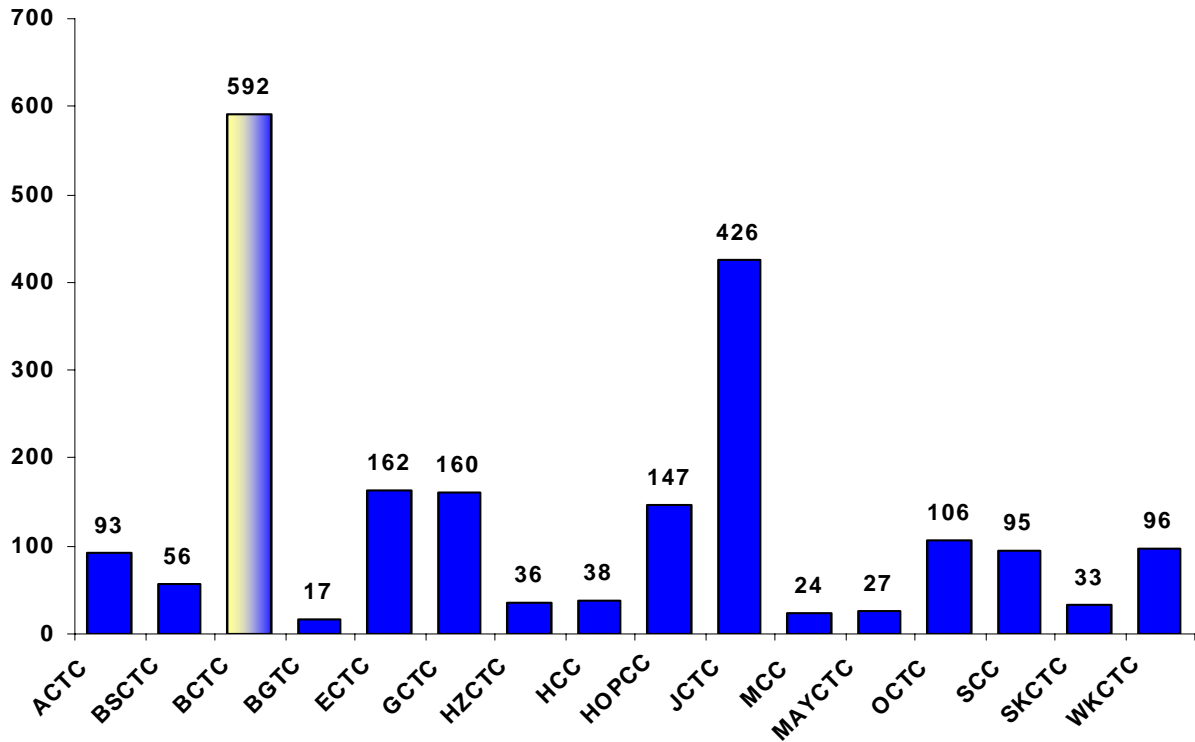


### First Time Student

#### Home College

	(N)	%
Ashland Community and Technical College	595	4.2
Big Sandy Community and Technical College	745	5.2
<b>Bluegrass Community and Technical College</b>	<b>2421</b>	<b>17.1</b>
Bowling Green Technical College	542	3.8
Elizabethtown Community and Technical College	1078	7.6
Gateway Community and Technical College	530	3.7
Hazard Community and Technical College	483	3.4
Henderson Community College	478	3.4
Hopkinsville Community College	568	4.0
Jefferson Community and Technical College	2292	16.1
Madisonville Community and Technical College	541	3.8
Maysville Community and Technical College	322	2.3
Owensboro Community and Technical College	605	4.3
Somerset Community College	1229	8.7
Southeast Community and Technical College	780	5.5
West Kentucky Community and Technical College	984	6.9
<b>KCTCS Totals</b>	<b>14193</b>	<b>100.0</b>

## KCTCS PEER COMPARISON Data 2004 - 2005 First Time Transfer to KCTCS Institution

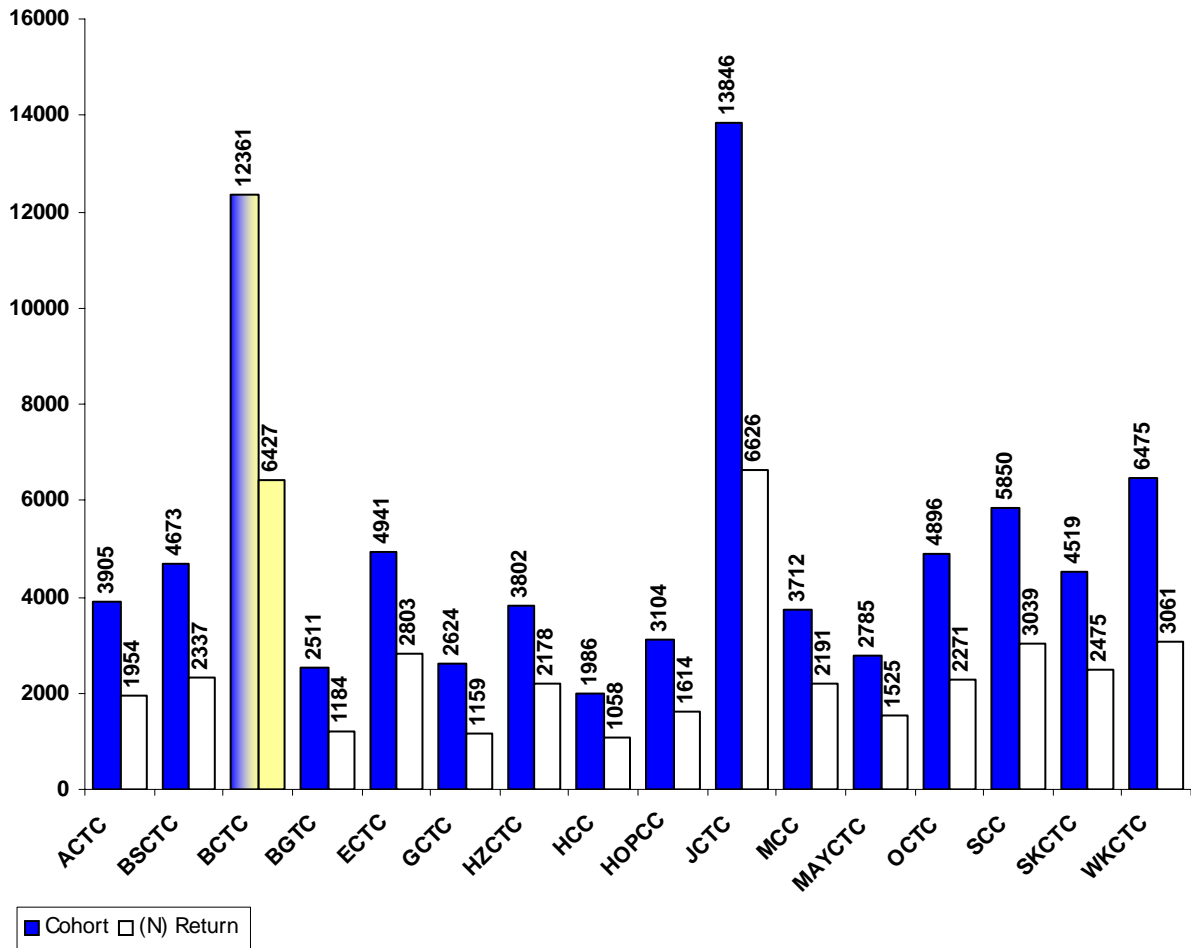


### First Time Transfer to KCTCS Institution

#### Home College

	(N)	%
Ashland Community & Technical College	93	4.41
Big Sandy Community & Technical College	56	2.66
<b>Bluegrass Community &amp; Technical College</b>	<b>592</b>	<b>28.08</b>
Bowling Green Technical College	17	0.81
Elizabethtown Community & Technical College	162	7.69
Gateway Community & Technical College	160	7.59
Hazard Community & Technical College	36	1.71
Henderson Community College	38	1.80
Hopkinsville Community College	147	6.97
Jefferson Community & Technical College	426	20.21
Madisonville Community College	24	1.14
Maysville Community & Technical College	27	1.28
Owensboro Community & Technical College	106	5.03
Somerset Community College	95	4.51
Southeast KY Community & Technical College	33	1.57
West KY Community & Technical College	96	4.55
<b>KCTCS Total</b>	<b>2108</b>	<b>100.00</b>

## KCTCS PEER COMPARISON Data 2004 - 2005 Retention Rate



Retention Rate			
<b>Home College</b>			
	<b>Cohort</b>	<b>(N) Return</b>	<b>%</b>
Ashland Community & Technical College	3905	1954	50.04%
Big Sandy Community & Technical College	4673	2337	50.01%
<b>Bluegrass Community &amp; Technical College</b>	<b>12361</b>	<b>6427</b>	<b>51.99%</b>
Bowling Green Technical College	2511	1184	47.15%
Elizabethtown Community & Technical College	4941	2803	56.73%
Gateway Community & Technical College	2624	1159	44.17%
Hazard Community & Technical College	3802	2178	57.29%
Henderson Community College	1986	1058	53.27%
Hopkinsville Community College	3104	1614	52.00%
Jefferson Community & Technical College	13846	6626	47.85%
Madisonville Community College	3712	2191	59.02%
Maysville Community & Technical College	2785	1525	54.76%
Owensboro Community & Technical College	4896	2271	46.38%
Somerset Community College	5850	3039	51.95%
Southeast KY Community & Technical College	4519	2475	54.77%
West KY Community & Technical College	6475	3061	47.27%
<b>KCTCS Totals</b>	<b>81990</b>	<b>41902</b>	<b>51.11%</b>

Source: Official CPE Enrollment Data

\* Totals are for all enrolled students, including workforce and high school

# KCTCS PEER COMPARISON Data 2004 - 2005

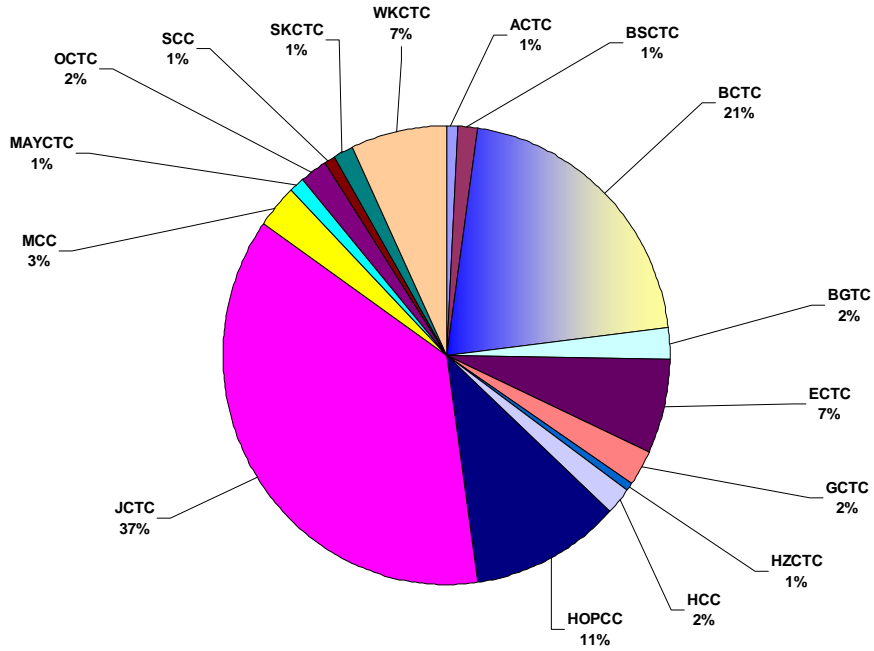
## Ethnicity

Ethnicity								
Home College	Am Indian or Alaskan Native		African American Non- Hispanic		Asian or Pacific Islander		Caucasian Non- Hispanic	
	(N)	%	(N)	%	(N)	%	(N)	%
Ashland Community & Technical College	3	0.00	53	0.06	13	0.02	3241	3.82
Big Sandy Community & Technical College	2	0.00	88	0.10	10	0.01	3925	4.62
<b>Bluegrass Community &amp; Technical College</b>	<b>46</b>	<b>0.05</b>	<b>1310</b>	<b>1.54</b>	<b>128</b>	<b>0.15</b>	<b>9009</b>	<b>10.61</b>
Bowling Green Technical College	2	0.00	140	0.16	23	0.03	2238	2.64
Elizabethtown Community & Technical College	21	0.02	416	0.49	76	0.09	4229	4.98
Gateway Community & Technical College	13	0.02	145	0.17	17	0.02	2376	2.80
Hazard Community & Technical College	4	0.00	48	0.06	13	0.02	3463	4.08
Henderson Community College	13	0.02	110	0.13	8	0.01	1568	1.85
Hopkinsville Community College	9	0.01	677	0.80	47	0.06	1699	2.00
Jefferson Community & Technical College	43	0.05	2332	2.75	189	0.22	8518	10.03
Madisonville Community College	8	0.01	175	0.21	17	0.02	3454	4.07
Maysville Community & Technical College	6	0.01	77	0.09	3	0.00	2645	3.11
Owensboro Community & Technical College	10	0.01	129	0.15	19	0.02	4529	5.33
Somerset Community College	17	0.02	41	0.05	20	0.02	5706	6.72
Southeast KY Community & Technical College	13	0.02	85	0.10	10	0.01	4041	4.76
West KY Community & Technical College	21	0.02	442	0.52	36	0.04	5530	6.51
<b>KCTCS Totals - % KCTCS Average</b>	<b>231</b>	<b>0.27</b>	<b>6268</b>	<b>7.4</b>	<b>629</b>	<b>0.74</b>	<b>66171</b>	<b>77.91</b>

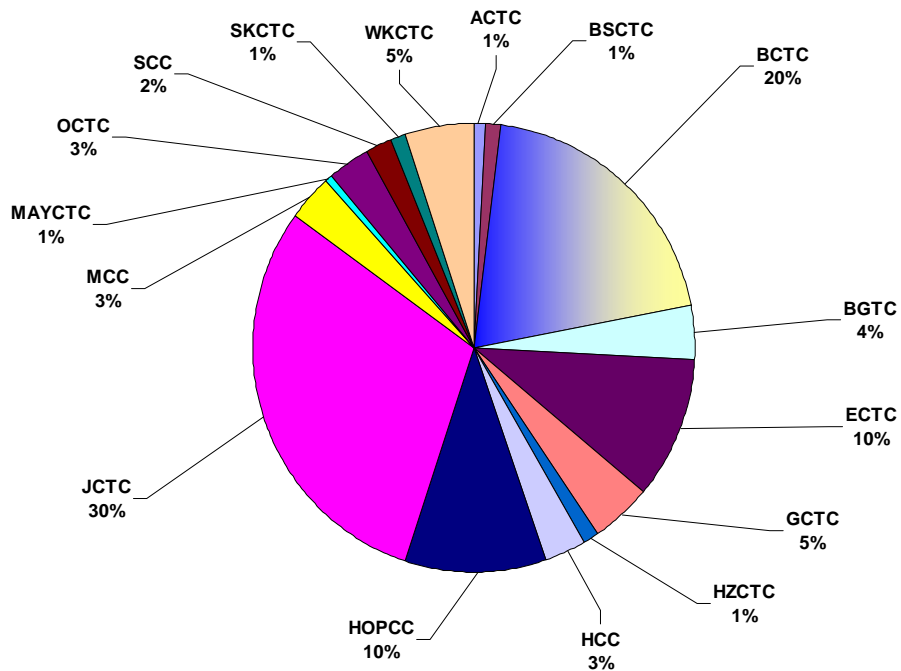
Home College	Hispanic		Non- Resident Alien		Unknown		All	% All
	(N)	%	(N)	%	(N)	%	(N)	% All
Ashland Community & Technical College	9	0.08	1	0.00	717	0.84	4037	4.75
Big Sandy Community & Technical College	10	0.09	0	0.00	780	0.92	4815	5.67
<b>Bluegrass Community &amp; Technical College</b>	<b>186</b>	<b>1.75</b>	<b>31</b>	<b>0.04</b>	<b>1653</b>	<b>1.95</b>	<b>12363</b>	<b>14.56</b>
Bowling Green Technical College	36	0.34	2	0.00	399	0.47	2840	3.34
Elizabethtown Community & Technical College	94	0.89	4	0.00	101	0.12	4941	5.82
Gateway Community & Technical College	43	0.41	7	0.01	351	0.41	2952	3.48
Hazard Community & Technical College	10	1.59	0	0.00	345	0.41	3883	4.57
Henderson Community College	27	0.25	9	0.01	282	0.33	2017	2.37
Hopkinsville Community College	95	0.90	0	0.00	654	0.77	3181	3.75
Jefferson Community & Technical College	280	2.64	38	0.04	2840	3.34	14240	16.77
Madisonville Community College	31	0.29	0	0.00	84	0.10	3769	4.44
Maysville Community & Technical College	6	0.06	0	0.00	536	0.63	3273	3.85
Owensboro Community & Technical College	26	0.25	0	0.00	334	0.39	5047	5.94
Somerset Community College	19	0.18	3	0.00	273	0.32	6079	7.16
Southeast KY Community & Technical College	10	0.09	1	0.00	552	0.65	4712	5.55
West KY Community & Technical College	47	0.44	0	0.00	706	0.83	6782	7.99
<b>KCTCS Totals - % KCTCS Average</b>	<b>929</b>	<b>1.09</b>	<b>96</b>	<b>0.11</b>	<b>10607</b>	<b>12.49</b>	<b>84931</b>	<b>100.00</b>

# KCTCS PEER COMPARISON Data 2004 - 2005 Ethnicity

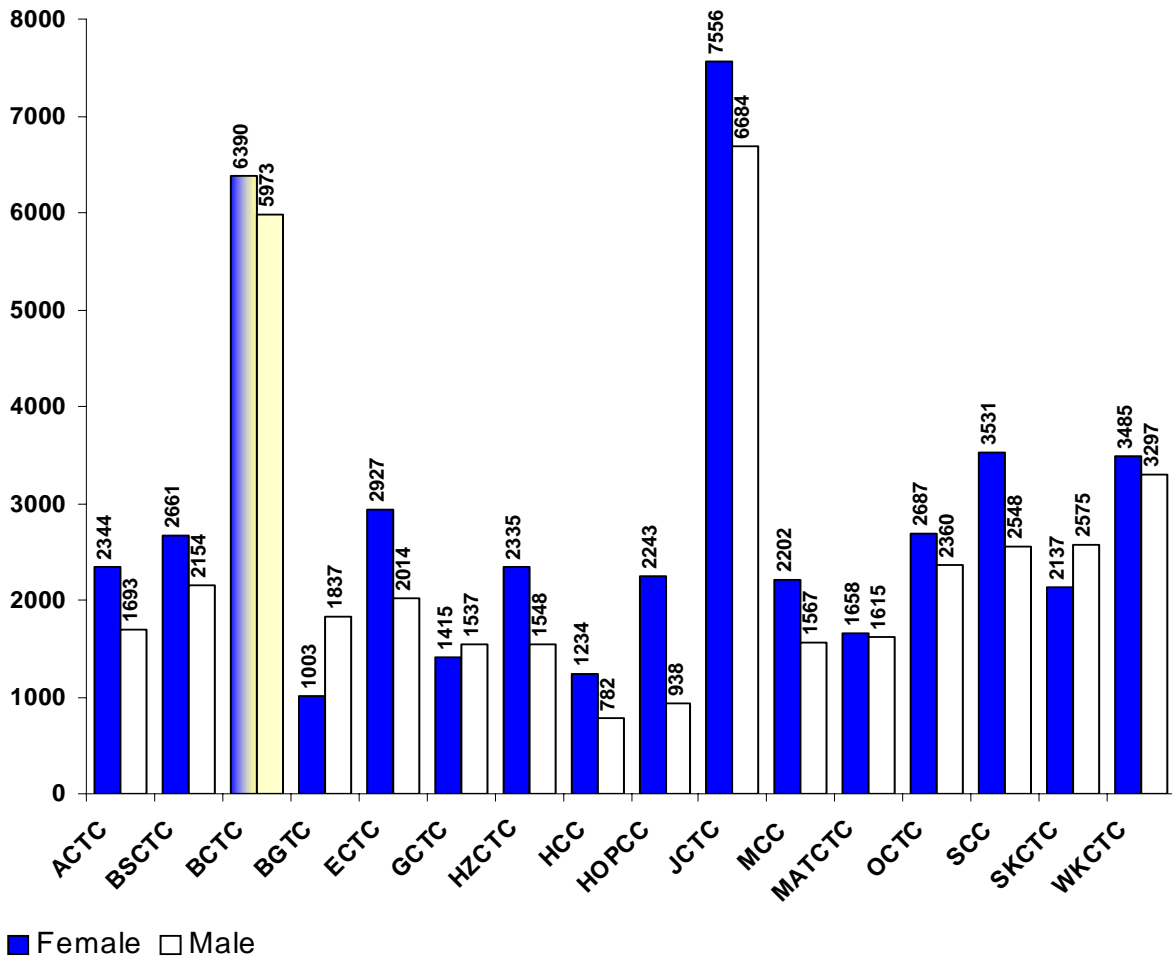
## KCTCS African American Students



## KCTCS Hispanic Students



## KCTCS PEER COMPARISON Data 2004 - 2005 Gender

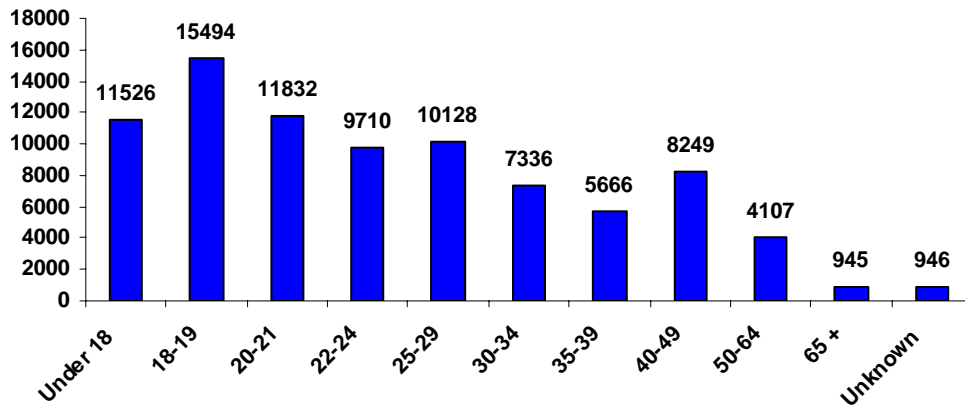


Gender					
Home College	Female		Male		Total (N)
	(N)	%	(N)	%	
Ashland Community & Technical College	2344	2.8	1693	2.0	4037
Big Sandy Community & Technical College	2661	3.1	2154	2.5	4815
<b>Bluegrass Community &amp; Technical College</b>	<b>6390</b>	<b>7.5</b>	<b>5973</b>	<b>7.0</b>	<b>12363</b>
Bowling Green Technical College	1003	1.2	1837	2.2	2840
Elizabethtown Community & Technical College	2927	3.4	2014	2.4	4941
Gateway Community & Technical College	1415	1.7	1537	1.8	2952
Hazard Community & Technical College	2335	2.7	1548	1.8	3883
Henderson Community College	1234	1.5	782	0.9	2017
Hopkinsville Community College	2243	2.6	938	1.1	3181
Jefferson Community & Technical College	7556	8.9	6684	7.9	14240
Madisonville Community College	2202	2.6	1567	1.8	3769
Maysville Community & Technical College	1658	2.0	1615	1.9	3273
Owensboro Community & Technical College	2687	3.2	2360	2.8	5047
Somerset Community College	3531	4.2	2548	3.0	6079
Southeast KY Community & Technical College	2137	2.5	2575	3.0	4712
West KY Community & Technical College	3485	4.1	3297	3.9	6782
<b>KCTCS Totals</b>	<b>45808</b>	<b>53.9</b>	<b>39122</b>	<b>46.1</b>	<b>84931</b>

# KCTCS PEER COMPARISON Data 2004 - 2005

## Age Groups

**KCTCS Age Groups**

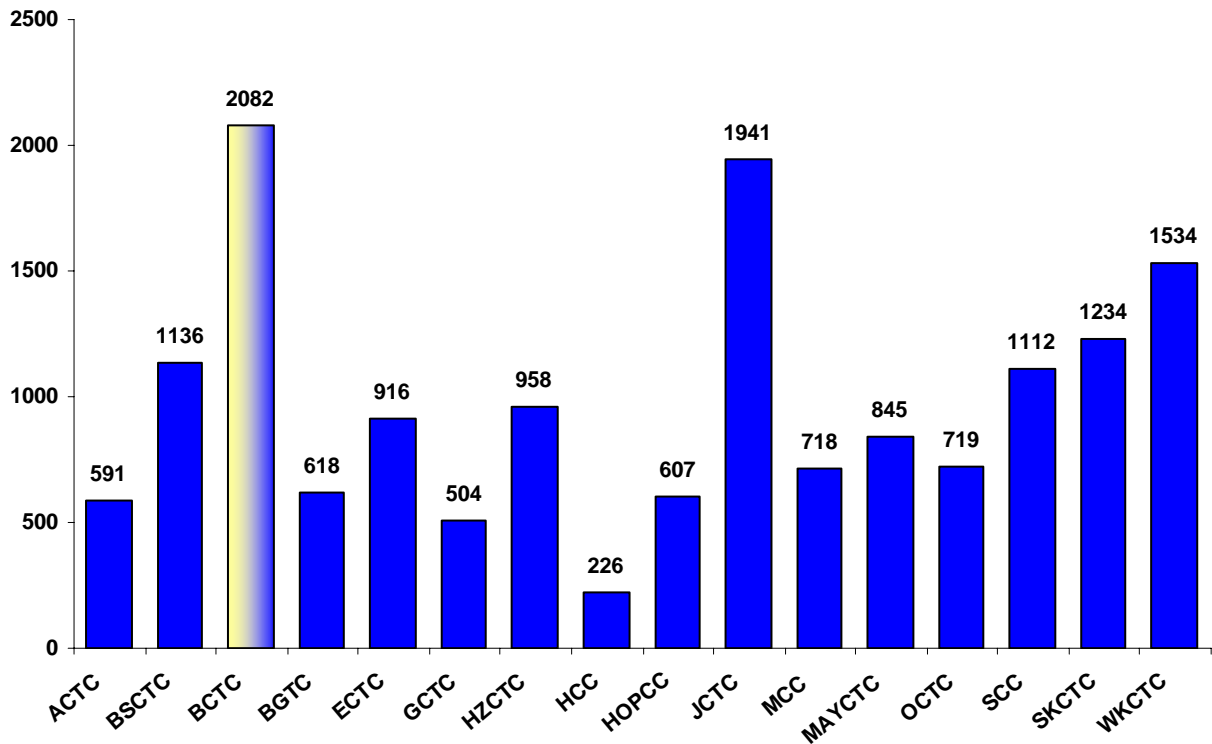


Age Groups												
Home College	Under 18		18-19		20-21		22-24		25-29		30-34	
	(N)	%	(N)	%	(N)	%	(N)	%	(N)	%	(N)	%
Ashland Community and Technical College	637	0.8	684	0.8	563	0.7	433	0.5	478	0.6	330	0.4
Big Sandy Community and Technical College	820	1.0	1032	1.2	648	0.8	470	0.6	483	0.6	380	0.4
<b>Bluegrass Community and Technical College</b>	<b>721</b>	<b>0.8</b>	<b>2312</b>	<b>2.7</b>	<b>2449</b>	<b>2.9</b>	<b>1951</b>	<b>2.3</b>	<b>1734</b>	<b>2.0</b>	<b>1087</b>	<b>1.3</b>
Bowling Green Technical College	468	0.6	341	0.4	262	0.3	245	0.3	310	0.4	292	0.3
Elizabethtown Community and Technical College	64	0.1	1055	1.2	845	1.0	593	0.7	619	0.7	482	0.6
Gateway Community and Technical College	428	0.5	461	0.5	366	0.4	314	0.4	345	0.4	225	0.3
Hazard Community and Technical College	570	0.7	804	0.9	556	0.7	441	0.5	360	0.4	355	0.4
Henderson Community College	49	0.1	287	0.3	228	0.3	227	0.3	230	0.3	191	0.2
Hopkinsville Community College	234	0.3	517	0.6	422	0.5	375	0.4	528	0.6	359	0.4
Jefferson Community and Technical College	1600	1.9	2675	3.1	2093	2.5	1966	2.3	1922	2.3	1252	1.5
Madisonville Community and Technical College	678	0.8	649	0.8	450	0.5	357	0.4	475	0.6	349	0.4
Maysville Community and Technical College	563	0.7	574	0.7	280	0.3	273	0.3	370	0.4	309	0.4
Owensboro Community and Technical College	1119	1.3	933	1.1	617	0.7	484	0.6	475	0.6	347	0.4
Somerset Community College	574	0.7	1182	1.4	781	0.9	671	0.8	719	0.8	504	0.6
Southeast Community and Technical College	985	1.2	852	1.0	543	0.6	374	0.4	395	0.5	308	0.4
West Kentucky Community and Technical College	1008	1.2	1136	1.3	729	0.9	536	0.6	685	0.8	566	0.7
<b>KCTCS Totals</b>	<b>11526</b>	<b>13.6</b>	<b>15494</b>	<b>18.2</b>	<b>11832</b>	<b>13.9</b>	<b>9710</b>	<b>11.4</b>	<b>10128</b>	<b>11.9</b>	<b>7336</b>	<b>8.6</b>

Home College	35-39		40-49		50-64		65 +		Unknown		Total	
	(N)	%	(N)	%	(N)	%	(N)	%	(N)	%	% All	
Ashland Community and Technical College	266	0.3	309	0.4	134	0.2	132	0.2	71	0.1	<b>4037</b>	<b>4.753</b>
Big Sandy Community and Technical College	280	0.3	400	0.5	205	0.2	26	0.0	71	0.1	<b>4815</b>	<b>5.669</b>
<b>Bluegrass Community and Technical College</b>	<b>695</b>	<b>0.8</b>	<b>893</b>	<b>1.1</b>	<b>339</b>	<b>0.4</b>	<b>57</b>	<b>0.1</b>	<b>125</b>	<b>0.1</b>	<b>12363</b>	<b>14.56</b>
Bowling Green Technical College	200	0.2	357	0.4	207	0.2	70	0.1	88	0.1	<b>2840</b>	<b>3.344</b>
Elizabethtown Community and Technical College	387	0.5	638	0.8	232	0.3	24	0.0	2	0.0	<b>4941</b>	<b>5.818</b>
Gateway Community and Technical College	231	0.3	357	0.4	192	0.2	21	0.0	12	0.0	<b>2952</b>	<b>3.476</b>
Hazard Community and Technical College	227	0.3	379	0.4	162	0.2	23	0.0	6	0.0	<b>3883</b>	<b>4.572</b>
Henderson Community College	156	0.2	300	0.4	215	0.3	110	0.1	24	0.0	<b>2017</b>	<b>2.375</b>
Hopkinsville Community College	291	0.3	288	0.3	81	0.1	79	0.1	7	0.0	<b>3181</b>	<b>3.745</b>
Jefferson Community and Technical College	970	1.1	1227	1.4	447	0.5	67	0.1	21	0.0	<b>14240</b>	<b>16.77</b>
Madisonville Community and Technical College	234	0.3	380	0.4	176	0.2	9	0.0	12	0.0	<b>3769</b>	<b>4.438</b>
Maysville Community and Technical College	277	0.3	373	0.4	207	0.2	44	0.1	3	0.0	<b>3273</b>	<b>3.854</b>
Owensboro Community and Technical College	308	0.4	466	0.5	250	0.3	48	0.1	0	0.0	<b>5047</b>	<b>5.942</b>
Somerset Community College	437	0.5	611	0.7	308	0.4	41	0.0	251	0.3	<b>6079</b>	<b>7.158</b>
Southeast Community and Technical College	265	0.3	512	0.6	418	0.5	60	0.1	0	0.0	<b>4712</b>	<b>5.548</b>
West Kentucky Community and Technical College	442	0.5	759	0.9	534	0.6	134	0.2	253	0.3	<b>6782</b>	<b>7.985</b>
<b>KCTCS Totals</b>	<b>5666</b>	<b>0.8</b>	<b>8249</b>	<b>0.8</b>	<b>4107</b>	<b>0.8</b>	<b>945</b>	<b>0.8</b>	<b>946</b>	<b>0.8</b>	<b>84931</b>	<b>100.0</b>

## KCTCS PEER COMPARISON Data 2004 - 2005 Total Credentials



### Total Credentials Awarded

College	(N)
Ashland Community & Technical College	591
Big Sandy Community & Technical College	1136
<b>Bluegrass Community &amp; Technical College</b>	<b>2082</b>
Bowling Green Technical College	618
Elizabethtown Community & Technical College	916
Gateway Community & Technical College	504
Hazard Community & Technical College	958
Henderson Community College	226
Hopkinsville Community College	607
Jefferson Community & Technical College	1941
Madisonville Community College	718
Maysville Community & Technical College	845
Owensboro Community & Technical College	719
Somerset Community College	1112
Southeast KY Community & Technical College	1234
West KY Community & Technical College	1534
<b>KCTCS TOTALS</b>	<b>15741</b>

# KCTCS PEER COMPARISON Data 2004 - 2005

## Program Credentials

KCTCS Total Credentials Awarded by Program 2004 - 2005									
--	--	--	--	--	--	--	--	--	--

Program	A C T C	B S T C	B C T C	B G T C	E C T C	G C T C	H Z T C	H C C C	H P C C
Accounting Technology/Technician and Bookkeeping		3		3	3	2			
Administrative Assistant and Secretarial Science, General		4	3	2		12			
Agricultural Production Operations, General								2	18
Aircraft Powerplant Technology/Technician									
Appliance Installation and Repair Technology/Technician					5				
Applied Horticulture/Horticultural Operations, General		5	11						
Architectural Drafting and Architectural CAD/CADD			25						
Autobody/Collision and Repair Technology/Technician		18	16	5		3	30		
Automobile/Automotive Mechanics Technology/Technician	7	71	61	16	81	13	41		
Barbering/Barber									
Biology Technician/Biotechnology Laboratory Technician									
Building/Property Maintenance and Management									
Business Administration and Management, General	18	46	55		32		112	6	65
Cabinetmaking and Millwork/Millwright				9					
Carpentry/Carpenter	18	85	101		7		5		
Chemical Technology/Technician	7								
Child Care Provider/Assistant	15	5	38		80	42	81	35	36
Civil Engineering Technology/Technician			6						
Clinical/Medical Laboratory Technician			19			1	5	15	
Commercial and Advertising Art						1			
Communications Systems Installation and Repair Technology		7				1			
Communications Technology/Technician		8		11		10			
Computer and Information Sciences, General	4	51	59	27	38	51	37	7	15
Computer Installation and Repair Technology/Technician					1				
Construction/Heavy Equipment/Earthmoving Equipment Operation							3		
Cosmetology/Cosmetologist, General	8	6	3			17	15		
Criminal Justice/Law Enforcement Administration	12	20			18				11
Culinary Arts/Chef Training	4			10	3				
Data Processing and Data Processing Technology/Technician			43		2				
Dental Hygiene/Hygienist		16	53					14	
Dental Laboratory Technology/Technician			9						
Diagnostic Medical Sonography/Sonographer and Ultrasound Technician				5					
Diesel Mechanics Technology/Technician	5	38	13		40	4	48		
Drafting and Design Technology/Technician, General	3	18	11	9	82		8		
Educational/Instructional Media Design			1						
Electrical, Electronic and Communications Engineering Technology/Technician			4						
Electrician	11	42	95	42	25	12	25		2
Electromechanical Technology/Electromechanical Engineering Technology				8				3	30
Emergency Medical Technology/Technician (EMT Paramedic)							1		
Engineering Technology, General		2	65	14	3			10	9
Environmental Engineering Technology/Environmental Technology			13						
Executive Assistant/Executive Secretary	159	110	75	28	14	1			94
Fire Science/Fire-fighting			3	1	3	4	17		
Forest Technology/Technician							18		
General Occupational/Technical Studies	33	5	128	56	14	14	32		4
Health Information/Medical Records Technology/Technician						5			

## KCTCS PEER COMPARISON Data 2004 - 2005 Program Credentials

### KCTCS Total Credentials Awarded by Program 2004 - 2005

Program	A	B	B	B	E	G	H	H
	C	S	C	G	C	C	Z	O
	T	T	T	T	T	T	T	P
	C	C	C	C	C	C	C	C
Health Unit Coordinator/Ward Clerk			1	9		7	19	
HVAC	7	23	45	5	8	46	19	
Industrial Electronics Technology/Technician		20	20		13		3	
Industrial Mechanics and Maintenance Technology	3	29	119	35	18	2		6
Instrumentation Technology/Technician				1				
Liberal Arts and Sciences/Liberal Studies	67	146	368		189		161	51 210
Library Assistant/Technician			7					
Licensed Practical/Vocational Nurse Training (LPN, LVN, Cert, Cipl, AAS)	28	50	229	192	11	191	139	21
Machine Shop Technology/Assistant	2	5	14	13	48	16		27
Management Information Systems, General		1						
Manufacturing Technology/Technician		1						
Mason/Masonry		12	11					
Mechanic and Repair Apprenticeship Studies								
Medical Administrative/Executive Assistant and Medical Secretary		201	65	55	29	4	10	
Medical Radiologic Technology/Science v Radiation Therapist			37	19	14		10	
Medical/Clinical Assistant			36			3		17
Message Therapy/Therapeutic Message						30		
Nuclear Medical Technology/Technologist			9					
Nurse/Nursing Assistant/Aide and Patient Care Assistant								
Nursing (RN Training)	55	20	76		52		59	65 43
Occupational Therapist Assistant								
Pharmacy Technician/Assistant	6					12		
Physical Therapist Assistant							8	
Plumbing Technology/Plumber								
Quality Control Technology/Technician					14			
Real Estate								
Respiratory Care Therapy/Therapist	6	10	10	14				
Securities Services Administration/Management			4					
Small Engine Mechanics and Repair Technology/Technician			30					
Social Work		17			9		19	1 16
Surgical Technology/Technologist	18		42	19				
Surveying Technology/Surveying		12					19	
Truck and Bus Driver/Commercial Vehicle Operation								
Upholstery/Upholsterer								
Welding Technology/Welder	95	29	49	10	60		14	
<b>KCTCS Total</b>	<b>591</b>	<b>1136</b>	<b>2082</b>	<b>618</b>	<b>916</b>	<b>504</b>	<b>958</b>	<b>226 607</b>

# KCTCS PEER COMPARISON Data 2004 - 2005

## Program Credentials

<b>KCTCS Total Credentials Awarded by Program 2004 - 2005</b>
---

Program	J C T C	M C C	M A Y C T C	O T C	S C C	S K T C	W K T C	K C T S
Accounting Technology/Technician and Bookkeeping	19						26	56
Administrative Assistant and Secretarial Science, General	10		2				2	35
Agricultural Production Operations, General		9		2				31
Aircraft Powerplant Technology/Technician	25				17			42
Appliance Installation and Repair Technology/Technician								5
Applied Horticulture/Horticultural Operations, General	47		20				59	142
Architectural Drafting and Architectural CAD/CADD								25
Autobody/Collision and Repair Technology/Technician	31				44	12	45	204
Automobile/Automotive Mechanics Technology/Technician	204		40	2	68	75		679
Barbering/Barber							10	10
Biology Technician/Biotechnology Laboratory Technician				1				1
Building/Property Maintenance and Management	54							54
Business Administration and Management, General	55	23	121	17	34	56	112	752
Cabinetmaking and Millwork/Millwright								9
Carpentry/Carpenter	205	90	33	11	33		87	675
Chemical Technology/Technician	2							9
Child Care Provider/Assistant	19	31	23	47	41			493
Civil Engineering Technology/Technician								6
Clinical/Medical Laboratory Technician		14			39	51		144
Commercial and Advertising Art	4							5
Communications Systems Installation and Repair Technology								8
Communications Technology/Technician	56				2		22	109
Computer and Information Sciences, General	61	34	23	25	6	17	32	487
Computer Installation and Repair Technology/Technician	2			3	1		3	10
Construction/Heavy Equipment/Earthmoving Equipment Operation						11		14
Cosmetology/Cosmetologist, General	9			12	5	1	14	90
Criminal Justice/Law Enforcement Administration		9		18	42	12		142
Culinary Arts/Chef Training	7			7			17	48
Data Processing and Data Processing Technology/Technician	20			1				66
Dental Hygiene/Hygienist							12	95
Dental Laboratory Technology/Technician								9
Diagnostic Medical Sonography/Sonographer and Ultrasound Technician							12	17
Diesel Mechanics Technology/Technician			9	9	80	59	102	407
Drafting and Design Technology/Technician, General		8	32	4		12	27	214
Educational/Instructional Media Design								1
Electrical, Electronic and Communications Engineering Technology/Technician	1	1						6
Electrician	56	23	3	100	24	15	69	544
Electromechanical Technology/Electromechanical Engineering Technology	14	12	12	16				95
Emergency Medical Technology/Technician (EMT Paramedic)							1	2
Engineering Technology, General	1	2	7	23		5	13	154
Environmental Engineering Technology/Environmental Technology								13
Executive Assistant/Executive Secretary	59		53	18	38	60	87	796
Fire Science/Fire-fighting								28
Forest Technology/Technician	9							27
General Occupational/Technical Studies	60	50	23	23	52	36	97	627
Health Information/Medical Records Technology/Technician								5

# KCTCS PEER COMPARISON Data 2004 - 2005

## Program Credentials

<b>KCTCS Total Credentials Awarded by Program 2004 - 2005</b>
---

Program	J C T C	M C C C	M A Y C T C	O C T C	S C C C	S K C C	W K C T	K C C S
Health Unit Coordinator/Ward Clerk	28						4	<b>68</b>
HVAC	27		68	9	7	5	18	<b>287</b>
Industrial Electronics Technology/Technician		1		15	15	18	26	<b>131</b>
Industrial Mechanics and Maintenance Technology	15	8	13	21	11		27	<b>307</b>
Instrumentation Technology/Technician								<b>1</b>
Liberal Arts and Sciences/Liberal Studies	268	121	42	175	184	283	246	<b>2511</b>
Library Assistant/Technician								<b>7</b>
Licensed Practical/Vocational Nurse Training (LPN, LVN, Cert, Cipl, AAS)	40	20	149	15	172	293	39	<b>1589</b>
Machine Shop Technology/Assistant	23	30	19	28	12	9	43	<b>289</b>
Management Information Systems, General								<b>1</b>
Manufacturing Technology/Technician								<b>1</b>
Mason/Masonry	47		34		3			<b>107</b>
Mechanic and Repair Apprenticeship Studies	1							<b>1</b>
Medical Administrative/Executive Assistant and Medical Secretary		47	15	1	88	23	30	<b>568</b>
Medical Radiologic Technology/Science v Radiation Therapist	37	21		15	14	40	16	<b>223</b>
Medical/Clinical Assistant	34		29		2	12	20	<b>153</b>
Message Therapy/Therapeutic Message								<b>30</b>
Nuclear Medical Technology/Technologist	9							<b>18</b>
Nurse/Nursing Assistant/Aide and Patient Care Assistant							34	<b>34</b>
Nursing (RN Training)	115	70	24	52	37	38	71	<b>777</b>
Occupational Therapist Assistant	9	14						<b>23</b>
Pharmacy Technician/Assistant								<b>18</b>
Physical Therapist Assistant	15	13			19	8	13	<b>76</b>
Plumbing Technology/Plumber	48	3	7		8			<b>66</b>
Quality Control Technology/Technician								<b>14</b>
Real Estate	21	1	1					<b>23</b>
Respiratory Care Therapy/Therapist	13	10	2		11	8	20	<b>104</b>
Securities Services Administration/Management								<b>4</b>
Small Engine Mechanics and Repair Technology/Technician	30		16					<b>76</b>
Social Work	25			8				<b>95</b>
Surgical Technology/Technologist	18	32	14	15		15	13	<b>186</b>
Surveying Technology/Surveying								<b>31</b>
Truck and Bus Driver/Commercial Vehicle Operation						17	51	<b>68</b>
Upholstery/Upholsterer	66							<b>66</b>
Welding Technology/Welder	22	21	11	26	3	43	14	<b>397</b>
<b>KCTCS Total</b>	<b>1941</b>	<b>718</b>	<b>845</b>	<b>719</b>	<b>1112</b>	<b>1234</b>	<b>1534</b>	<b>15741</b>